



... monitoring the movements
of your FIFO workforce ...



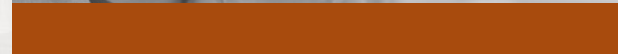
Any statements made herein are of a general nature and do not take account of any specific situations, objectives, needs or circumstances.
VAMS is a product suite and functionality is enabled or disabled by the presence or absence of discrete modules within that suite.
VAMS products require expert implementation and configuration to enable the full benefits of the solution to be realised.
Read the relevant Product Disclosure Statement before acquiring any product mentioned in this material.



PERTH
Suite 12, 9 Vale Street, Malaga, Western Australia 6090
PO Box 227, Karrinyup, Western Australia 6921
p: +61 8 9249 6460 1300 728 448 f: +61 8 9249 6465
e: sales@vams.com.au

BRISBANE
Bld 1, Corporate House
747 Lytton Road, Murarrie, Queensland 4172
p: +61 7 3117 3791 1300 728 448 f: +61 7 3117 3797
e: brisbane@vams.com.au

www.vams.com.au





Delivers card administration, event monitoring, occupant tracking and time based restricted access control across a TCP/IP network from a central VAMS camp administration console.



■ **ACCESS CONTROL**

VAMS manages access to limited, restricted and secure areas using anti-passback enabled proximity cards that grant or deny right of way through physical barriers, perimeter access points, turnstiles, doors and gates.

■ **EVENT MONITORING**

Records all events concurrently and in near real time. Successful or failed events from a single gate or multiple (up to 256) access points. Report and query events filtered by date/time, event type, gate, occupant and contractor.

■ **CARD MANAGEMENT**

A selection of best-of-breed card solutions with optional photo ID, stored value and encoded personnel compliance details. Cards are assigned to occupants and activated based on shift, time of day or on/off site movement.

■ **CENTRAL CONTROL 'DASHBOARD'**

Data moves freely between access points and VAMS over a TCP/IP network on a timed or operator initiated basis. All functions including reporting managed and controlled from a single screen administrator's dashboard.

... monitoring the movements of your FIFO workforce ...



THE SOLUTION

An integrated access control solution for remote sites that delivers:

- Dining room control over unauthorised entry.
- Real time monitoring and control of access points.
- Proximity cards that ensure only authorised personnel have access.
- Query and reporting on traffic, movement and access.
- Central control over access/deny and card status.
- Seamless integration between accommodation and access control.

THE BENEFITS

- Passive denial of access to unauthorised dining room entrants.
- Control over wastage and more accurate forecasting of food requirements.
- Enforced key handover and attendance at check-in/checkout.
- Fine tune hours of opening and improve traffic movement using accurate stats.
- Streamline induction procedures to include access control.
- Automatically schedule access based on roster and arrival/departure.

THE DIFFERENTIATORS

- Access control and accommodation in one seamless process.
- Multiple access points managed from a single, administrator console.
- Passive control over contractor and occupant movement.
- Exception reporting – meals without stay - stay without meals.
- Cashless purse option for wet mess, additional meals and extra charges.
- Access control 'closes the loop' between room, occupant and booking.

THE UNIQUE VALUE OF VAMS

- The No.1 market leader in the camp contractor systems market.
- VAMS expertise pool easily sourced from many sites over many years.
- Minimum IT footprint means no complex IT to go wrong or slow you down.
- Ready-to-go on mobilisation day 1 with a computer and simple instructions.
- Low total cost of purchase, implementation, equipment and support.
- Track record of remote travel and accommodation management since 1983.
- Experienced in remote support with 100,000 rooms managed over 4 continents.
- Foreign language and multilingual support.